



# 规格书 Specification

品名/Term:卡侬三芯母插座

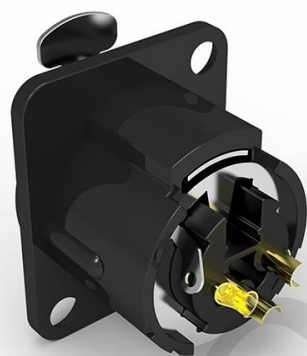
XLR connector-3 pin female socket

型号/Model:SW3XFZ-B (Black)

承认签章/Admit signature					
供应商确认/supplier			客户公司承认/customer		
工程师 engineer	审核 audit	批准 approval	工程师 engineer	审核 audit	批准 approval
LXQ	WXW	CJY			
盖章签署 signature			盖章签署 signature		
日期/date			日期/date		

## 一、产品外观 (Product Appearance)

SW3XFZ-B



## 二、产品特性 (Product features)

☑标准的 D 型安装尺寸，同现有的安装完全匹配

Standard D mounting dimensions, fully matched to existing installation

☑尺寸轻巧，可前后安装

Light size, can be installed front and back

☑锌合金外壳，接触点镀金

Zinc alloy shell, contact point gold-plated

☑可以解决 DMX 灯光行业在户外条件信号输入输出的快速连接要求

Can solve the fast connection requirement of input and output of DMX

signal in outdoor conditions in the lighting industry

☑防护等级 IP40

Protection class IP40

## 三、技术参数 (Technical parameters)

### 1.产品参数 (Product parameters)

连接类型( Connection Type)	XLR
公母性( Gender)	Female

## 2.电气参数 (Electrical parameters)

触点间电容 (Capacitance between contacts )	≤4pF
接触电阻 (Contact resistance )	≤5mΩ
介电强度 (Dielectric strength )	1.5kV DC
绝缘电阻 (Insulation resistance)	> 1.5GΩ (initial)
每触点间额定电流(Rated current per contact)	10A
额定电压( Rated voltage)	<50V

## 3.机械参数 (Mechanical parameters)

插入力 (Insertion force)	≤ 40N
拔出力 (Withdrawal force )	≤ 40N
使用寿命 (Service life )	> 1000 mating cycles
底座外形 (Chassis shape)	D type

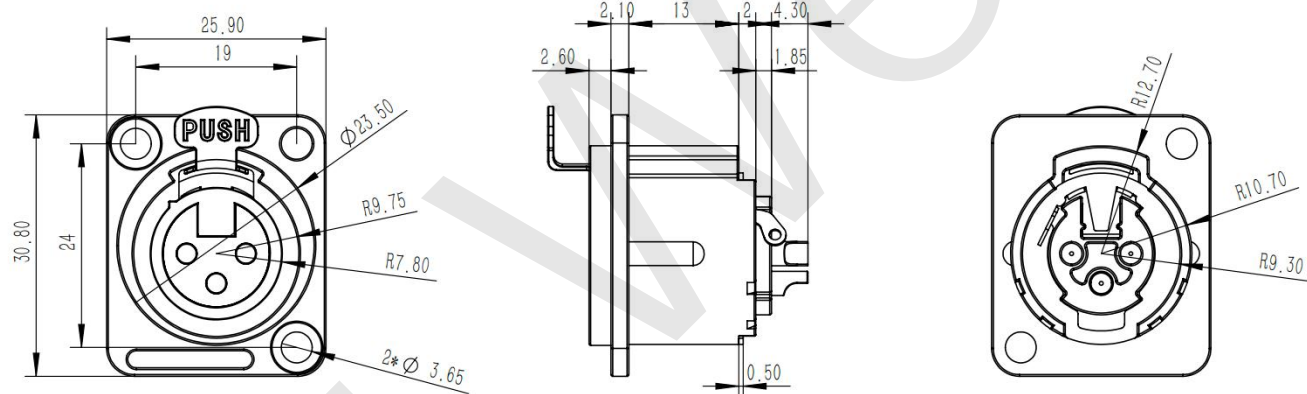
## 4.材料和环境 (Material and environmental parameters)

触点 (Contacts )	Cu alloy
触点电镀 (Contact plating )	Au
内芯 (Insert )	Polyamide (PA66 +30 %GF)
外壳 (Shell )	Zinc diecast (ZnAl4Cu1)
外壳电镀(Shell plating )	Cr black
可焊性(Solder ability)	Complies with IEC 68-2-20
阻燃等级 (Flame-retardant grade )	UL 94 HB
防护等级 (Protection class )	IP40
使用温度范围(Temperature range )	-20°Cto +80°C

#### 四、产品外形尺寸 (Product Profile)

SW3XFZ-B

Unit:mm



#### 五、组装图 (Assembly reference)

